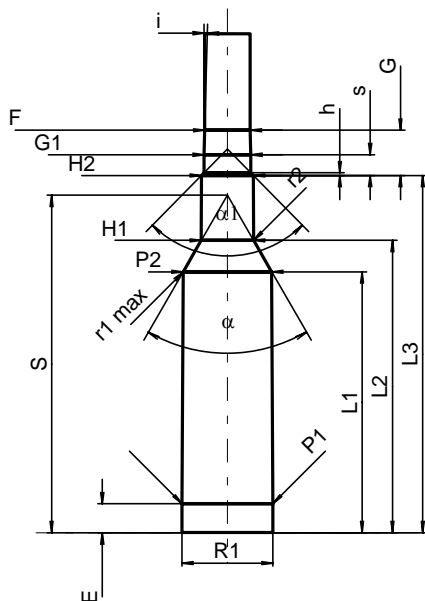
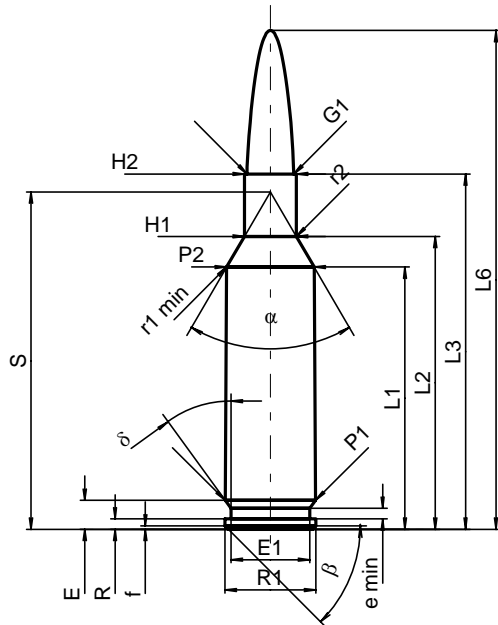


C.I.P.**6 x 47 SM**

Ursprungsland: CH

TAB.	I
Datum	02-01-22
Revision	02-05-15



Maßstab 1:1

Maße in << mm >>
Maße und Toleranzen für Messläufe
siehe Anhang CR 1.

PATRONE MAXI**Längen**

L1 ¹⁾	=	34.69	-0.20
L2 ¹⁾	=	38.74	-0.20
L3 ¹⁾	=	47.00	
L4	=		
L5	=		
L6	=	66.00	

Hülsenboden

R	=	1.37	
R1	=	12.01	
R3	=		
E	=	3.85	
E1	=	10.39	
e min	=	1.40	
δ	=	36°	
f	=	0.45	
β	=	45°	

Pulverkammer

P1	=	11.96	
P2 ^{1)*}	=	11.59	-0.20

Schulterkonus

α [*]	=	60°30'	
S [*]	=	44.63	
r1 min	=	1.50	
r2	=	1.50	

Hülsenhals

H1 [*]	=	6.87	
H2 ¹⁾	=	6.87	

Geschoss

G1 ¹⁾	=	6.18	
G2	=		
F	=		
L3+G ¹⁾	=	52.98	

Drücke (Energien)**Mech. elektr. Wandler**

Pmax	=	3900 bar	
PK	=	4485 bar	
PE	=	4875 bar	
M	=	25.00	
EE	=	2730 Joule	

Verschiedene Daten

Fe ¹⁾	=	0.10	
delta L	=	0.08	

PATRONELAGER MINI**Längen**

L1	=	34.51	
L2	=	38.66	
L3 ¹⁾	=	47.26	

Stoßboden

R	=		
R1	=	12.04	
R2	=		
R3	=		
r	=		

Pulverkammer

E	=	3.85	
P1 ¹⁾	=	11.99	
P2 [*]	=	11.70	

Schulterkonus

α ^{1)*}	=	60°	
S [*]	=	44.64	
r1 max	=	0.64	
r2	=	1.91	

Hülsenhals

H1 [*]	=	6.91	
H2 ¹⁾	=	6.88	

Geschossübergang

G1 ^{1)*}	=	6.19	
G ¹⁾	=	5.98	
α1	=	89°10'32"	
h	=	0.35	
s [*]	=	2.74	
i ^{1)*}	=	1°35'24"	
w	=		

Lauf

F ^{1)*}	=	6.01	
Z ¹⁾	=	6.17	

Züge

b	=	2.15	
N	=	6	
u	=	205.00	
Q	=	29.42	mm ²

Bemerkungen: 1) Kontrolle aus Sicherheitsgründen
* Grundmaße