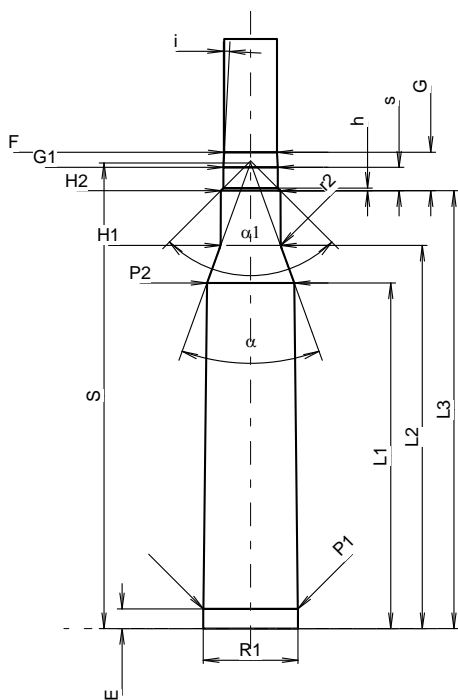
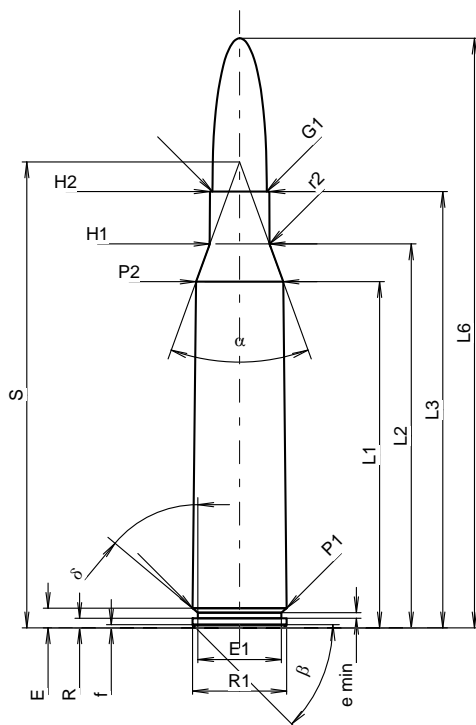


C.I.P.**338 Lapua Mag.**

TAB.	I
Date	89-09-09
Revision	16-10-18

Country of Origin: FI

Alternative Names: 8,6 (mm) x 70



Scale 1:1.2

Dimensions in << mm >>
Dimensions and Tolerances for Proof Barrels
see Appendix CR 1.

CARTRIDGE MAXI**Lengths**

L1 ¹⁾ *	=	54.90	-0.20
L2 ¹⁾ *	=	60.89	-0.20
L3 ¹⁾	=	69.20	
L4	=		
L5	=		
L6	=	93.50	

Case Head

R	=	1.52
R1	=	14.93
R3	=	
E	=	3.12
E1	=	13.24
e min	=	0.90
delta	=	50°04'48"
f	=	0.50
beta	=	45°

Powder Chamber

P1	=	14.91	
P2 ¹⁾ *	=	13.82	-0.20

Junction Cone

alpha	=	39°59'49"
S	=	73.89
r1 min	=	
r2	=	2.50

Collar

H1 *	=	9.46
H2 ¹⁾	=	9.41

Projectile

G1 ¹⁾	=	8.61
G2	=	
F	=	
L3+G ¹⁾	=	75.28

Pressures (Energies)**Method Transducer**

Pmax	=	4200 bar
PK	=	4830 bar
PE	=	5250 bar
M	=	25.00
EE	=	6600 Joule

Miscellaneous Dimensions

Fe ¹⁾³⁾	=	0.10
delta L	=	0.05

Notes: 1) Check for safety reasons
3) Headspace on Shoulder
* Basic dimensions

CHAMBER MINI**Lengths**

L1 *	=	54.81
L2 *	=	60.77
L3 ¹⁾	=	69.45

Breech

R	=	
R1	=	15.03
R2	=	
R3	=	
r	=	

Powder Chamber

E	=	3.12
P1 ¹⁾	=	14.96
P2 *	=	13.85

Junction Cone

alpha ¹⁾	=	40°00'45"
S	=	73.83
r1 max	=	
r2	=	3.00

Collar

H1 *	=	9.51
H2 ¹⁾	=	9.45

Commencement of Rifling

G1 ¹⁾ *	=	8.63
G ¹⁾ *	=	6.08
alpha1	=	90°
h	=	0.41
s *	=	3.70
i ¹⁾	=	3°00'23"
w	=	

Barrel

F ¹⁾ *	=	8.38
Z ¹⁾	=	8.58

Grooves

b	=	2.79
N	=	6
u	=	254.00
Q	=	56.86 mm ²