

# C.I.P.

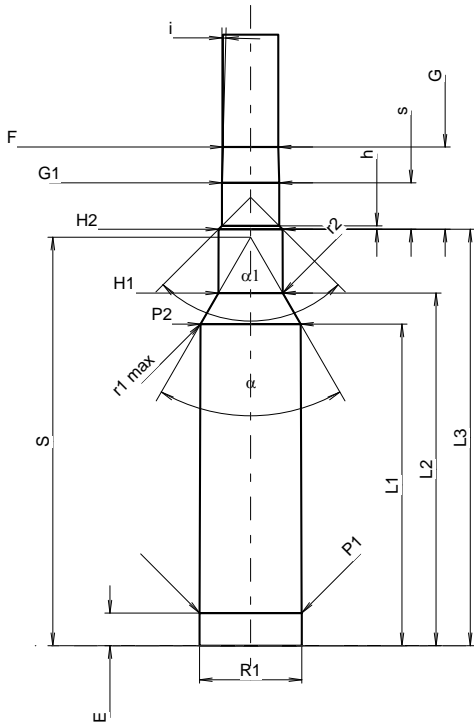
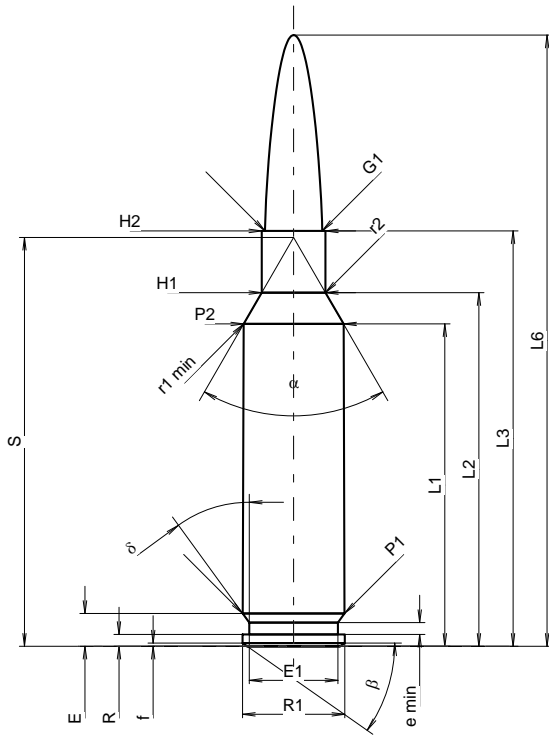
## 6,5 Creedmoor

Country of Origin: US

TAB. I

Date 12-05-30

Revision



Scale 1.13:1

Dimensions in << mm >>  
Dimensions and Tolerances for Proof Barrels  
see Appendix CR1.

### CARTRIDGE MAXI

#### Lengths

L1 <sup>1)</sup>	=	37.84	-0.20
L2 <sup>1)</sup>	=	41.52	-0.20
L3 <sup>1)</sup>	=	48.77	
L4	=		
L5	=		
L6	=	71.76	

#### Case Head

R	=	1.37	
R1	=	12.01	
R3	=		
E	=	3.84	
E1	=	10.39	
e min	=	1.40	
delta	=	36°	
f	=	0.38	
beta	=	35°	

#### Powder Chamber

P1	=	11.95	
P2 <sup>1)</sup> *	=	11.74	-0.20

#### Junction Cone

alpha *	=	60°	
S *	=	48.01	
r1 min	=	0.76	
r2	=	3.18	

#### Collar

H1 *	=	7.49	
H2 <sup>1)</sup>	=	7.49	

#### Projectile

G1 <sup>1)</sup>	=	6.72	
G2	=		
F	=		
L3+G <sup>1)</sup>	=	58.42	

#### Pressures (Energies)

#### Method Transducer

Pmax	=	4350 bar	
PK	=	5003 bar	
PE	=	5438 bar	
M	=	25.00	
EE	=	3400 Joule	

#### Miscellaneous Dimensions

Fe <sup>1)3)</sup>	=	0.10	
delta L	=	0.06	

### CHAMBER MINI

#### Lengths

L1	=	37.76	
L2	=	41.42	
L3 <sup>1)</sup>	=	48.90	

#### Breech

R	=		
R1	=	12.01	
R2	=		
R3	=		
r	=		

#### Powder Chamber

E	=	3.84	
P1 <sup>1)</sup>	=	11.98	
P2 *	=	11.76	

#### Junction Cone

alpha <sup>1)</sup> *	=	60°	
S *	=	47.95	
r1 max	=	0.76	
r2	=	3.18	

#### Collar

H1 *	=	7.54	
H2 <sup>1)</sup>	=	7.52	

#### Commencement of Rifling

G1 <sup>1)</sup> *	=	6.72	
G <sup>1)</sup>	=	9.65	
alpha 1	=	90°	
h	=	0.40	
s *	=	5.45	
i <sup>1)</sup> *	=	1°30'	
w	=		

#### Barrel

F <sup>1)</sup> *	=	6.50	
Z <sup>1)</sup>	=	6.71	

#### Grooves

b	=	2.29	
N	=	6	
u	=	203.00	
Q	=	34.66	mm <sup>2</sup>

Notes: 1) Check for safety reasons  
3) Headspace on Shoulder  
\* Basic dimensions