

C.I.P.

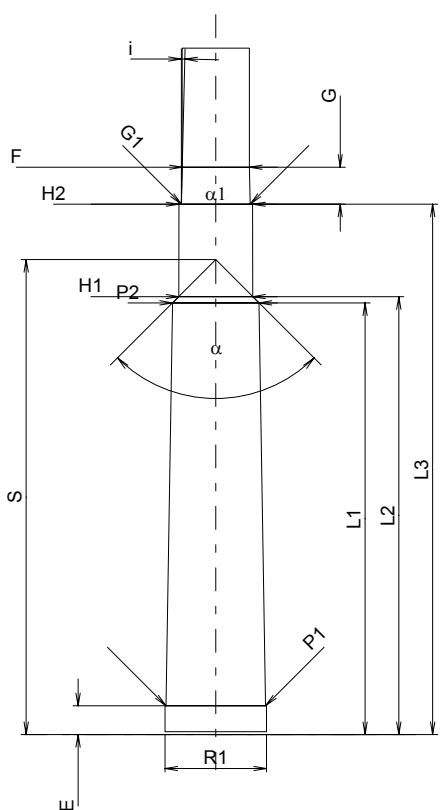
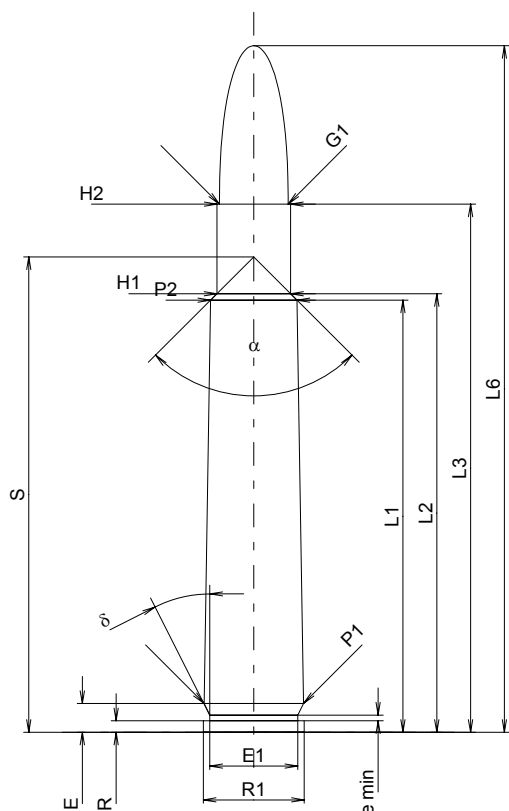
350 Mag. Rigby

Country of Origin: GB

TAB. I

Date 84-06-14

Revision 02-05-15



Scale 1:1

Dimensions in << mm >>
Dimensions and Tolerances for Proof Barrels
see Appendix CR 1.

CARTRIDGE MAXI

Lengths

L1 ¹⁾	=	57.15	-0.20
L2 ¹⁾	=	57.99	-0.20
L3 ¹⁾	=	69.85	
L4	=		
L5	=		
L6	=	90.80	

Case Head

R	=	1.52	
R1	=	13.36	
R3	=		
E	=	3.81	
E1	=	11.61	
e min	=	0.76	
delta	=	26°51'36"	
f	=		
beta	=		

Powder Chamber

P1	=	13.16	
P2 ¹⁾ *	=	11.43	-0.20

Junction Cone

alpha	=	90°	
S	=	62.86	
r1 min	=		
r2	=		

Collar

H1*	=	9.75	
H2 ¹⁾	=	9.73	

Projectile

G1 ¹⁾	=	9.07	
G2	=		
F	=		
L3+G ¹⁾	=	74.75	

Pressures (Energies)

Method Transducer

Pmax	=	3100 bar	
PK	=	3565 bar	
PE	=	3875 bar	
M	=	25.00	
EE	=	4810 Joule	

Miscellaneous Dimensions

Fe ¹⁾	=	0.15	
delta L	=		

CHAMBER MINI

Lengths

L1*	=	57.10	
L2*	=	57.94	
L3 ¹⁾	=	70.15	

Breech

R	=	1.52	
R1	=	13.41	
R2	=		
R3	=		
r	=		

Powder Chamber

E	=	3.81	
P1 ¹⁾	=	13.18	
P2*	=	11.46	

Junction Cone

alpha ¹⁾	=	90°	
S	=	62.83	
r1 max	=		
r2	=		

Collar

H1*	=	9.78	
H2 ¹⁾	=	9.75	

Commencement of Rifling

G1 ¹⁾ *	=	9.13	
G ¹⁾ *	=	4.90	
alpha1	=	180°	
h	=		
s	=		
i ¹⁾ *	=	1°30'	
w	=		

Barrel

F ¹⁾ *	=	8.89	
Z ¹⁾	=	9.06	

Grooves

b	=		
N	=		
u	=	305.00	
Q	=	62.07	mm ²

Notes: 1) Check for safety reasons
* Basic dimensions