

C.I.P.**9 x 17**

TAB.

VI

Datum

84-06-14

Revision

94-05-31

Ursprungsland: DE

PATRONE MAXI**Längen**

L1	=	
L2	=	
L3 ¹⁾	=	18.30
L4	=	
L5	=	
L6	=	18.15

Hülsenboden

R	=	1.35
R1	=	11.10
R3	=	
E	=	
E1	=	
e min	=	
δ	=	
f	=	0.30
β	=	45°

Pulverkammer

P1	=	9.58
P2	=	

Schulterkonus

α	=	
S	=	
r1 min	=	
r2	=	

Hülsenhals

H1	=	
H2 ¹⁾	=	9.58

Volumen [cm³]

VC	=	1.08
Va 1	=	0.40
Va 2	=	

Drücke (Energien)**Mechan. elektr. Wandler [Va1]**

Pmax	=	1450 bar
PK	=	1668 bar
PE	=	1885 bar
M	=	

Verschiedene Daten

Fe	=	
delta L	=	

PATRONENLAGER MINI**Längen**

L1	=	
L2	=	
L3 ¹⁾	=	18.50

Stossboden

R ¹⁾	=	1.30
R1	=	11.20
R2	=	
R3	=	
r	=	

Pulverkammer

E	=	
P1	=	9.60
P2	=	

Schulterkonus

α	=	
S	=	
r1 max	=	
r2	=	

Hülsenhals

H1	=	
H2	=	9.60

Übergang

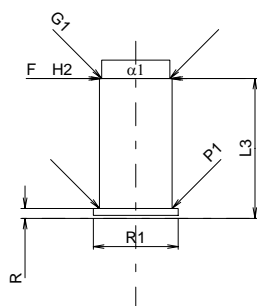
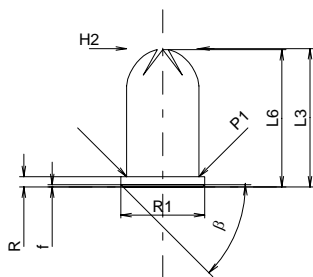
G1 *	=	9.00
G	=	
α1	=	180°
h	=	
s	=	
i	=	
w	=	

Lauf

F *	=	9.00
Z	=	9.00

Volumen [cm³]

V(ET)	=	1.37
V(T)	=	



Maßstab 1:1

Maße in << mm >>
Maße und Toleranzen für Messläufe
siehe Anhang CR 3.

Bemerkungen: 1) Kontrolle aus Sicherheitsgründen
* Grundmaße